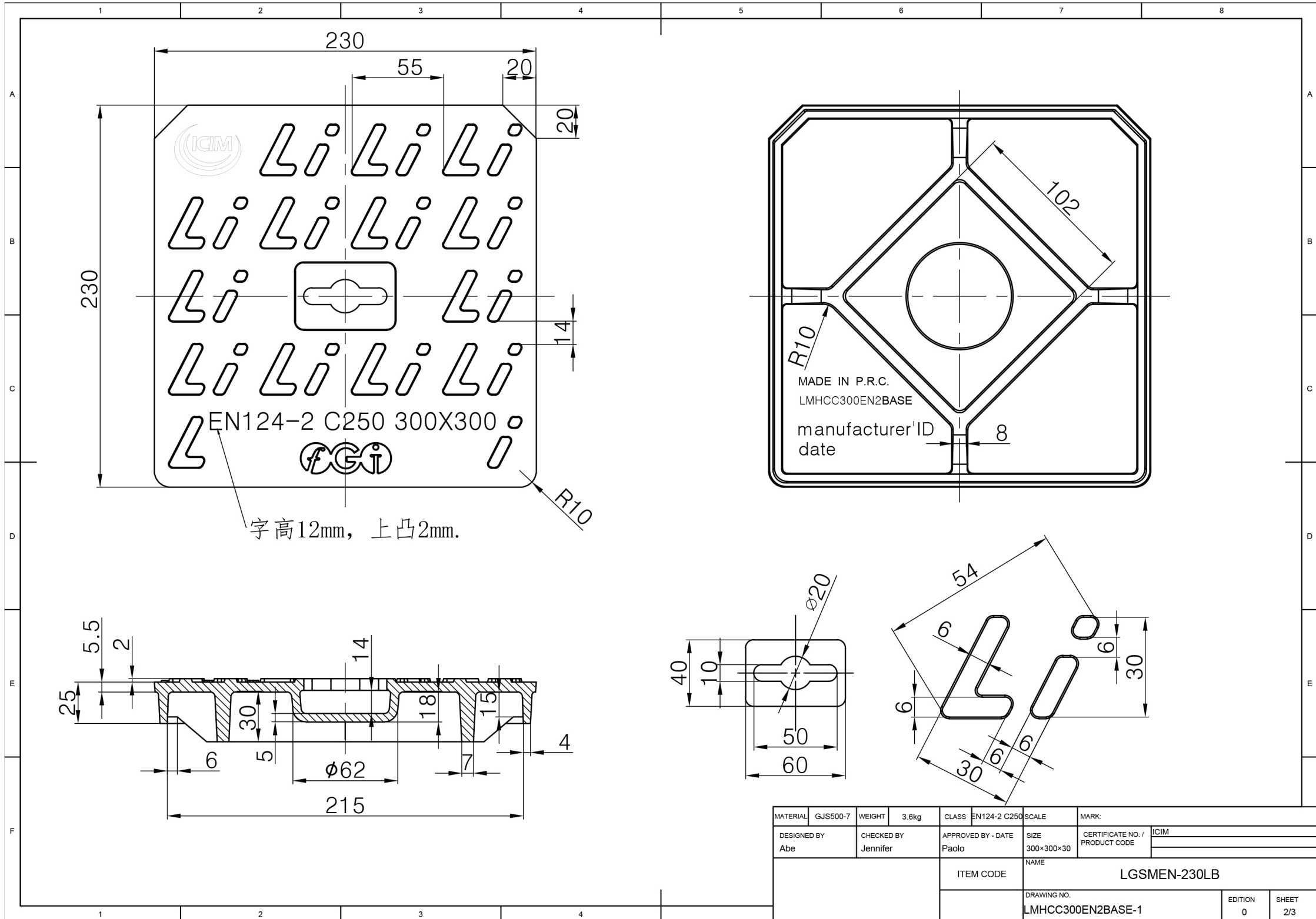


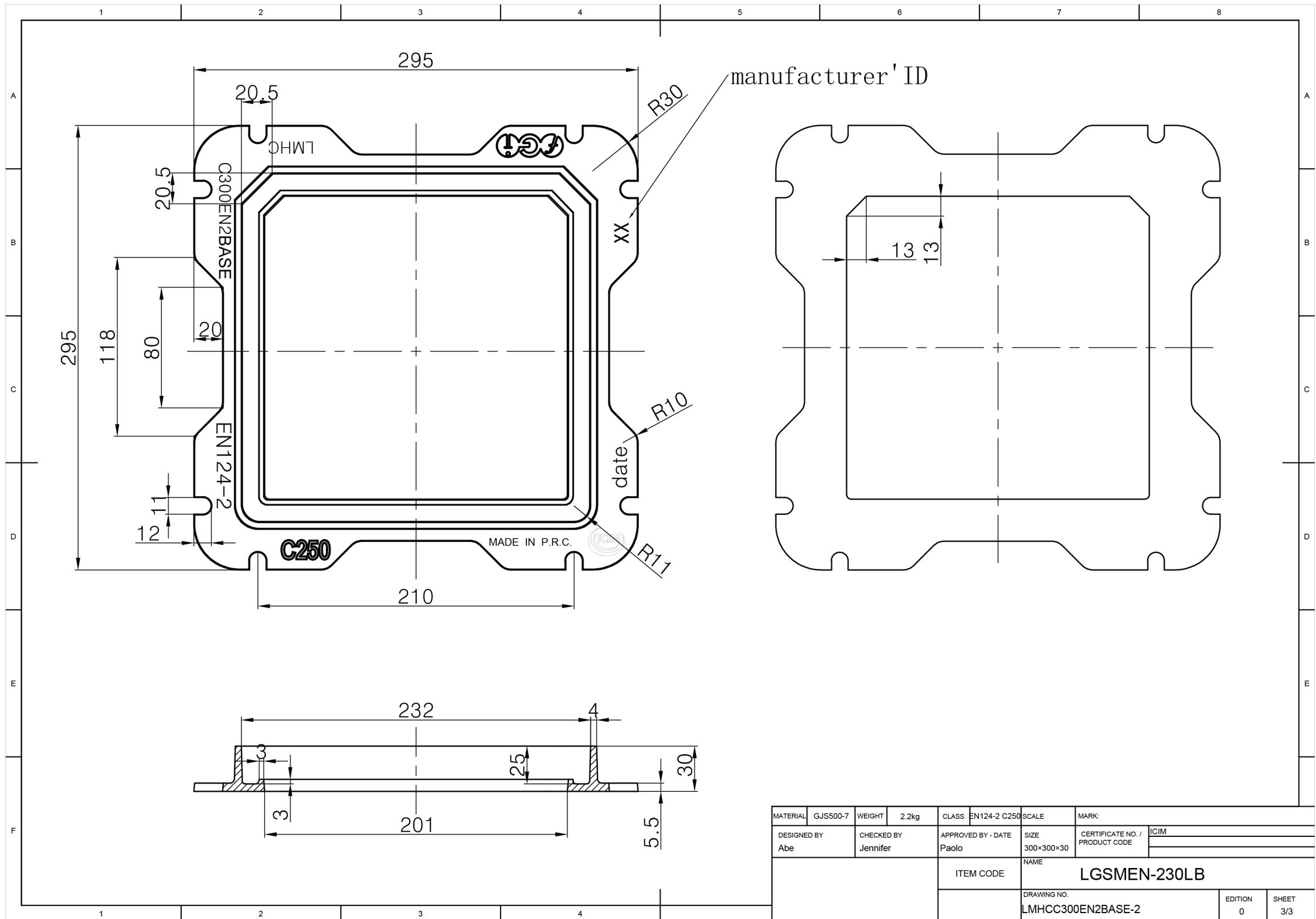
Technical requirement

- 1' pattern draft is 1-2° of main beams ,cover ,grids, frame side.
- 2' pattern draft is 5-10° of assistive beams ,gird holes ,outside.
- 3' pattern draft is 15° of surface patterns ,mark, logo.
- 4' casting radius which aren't been marked is R1-R3.

MATERIAL	GJS500-7	WEIGHT	5.8kg	CLASS	EN124-2 C250	SCALE	MARK:
DESIGNED BY	Abe	CHECKED BY	Jennifer	APPROVED BY - DATE	Paolo	SIZE	CERTIFICATE No. / PRODUCT CODE
						300x300x30	ICIM
						NAME	LGSMEN-230LB
						ITEM CODE	
						DRAWING NO.	EDITION
						LMHCC300EN2BASE	0
							SHEET
							1/3



MATERIAL	GJS500-7	WEIGHT	3,6kg	CLASS	EN124-2 C250	SCALE		MARK	
DESIGNED BY	Abe	CHECKED BY	Jennifer	APPROVED BY - DATE	Paolo	SIZE	300x300x30	CERTIFICATE NO. / PRODUCT CODE	ICIM
ITEM CODE						LGSMEN-230LB			
DRAWING NO.						EDITION		SHEET	
LMHCC300EN2BASE-1						0		2/3	



MATERIAL	GJS500-7	WEIGHT	2.2kg	CLASS	EN124-2 C250	SCALE	MARK:				
DESIGNED BY	Abe	CHECKED BY	Jennifer	APPROVED BY - DATE	Paolo	SIZE	300x300x30	CERTIFICATE NO. / PRODUCT CODE	ICIM		
						ITEM CODE	NAME LGSMEN-230LB				
						DRAWING NO.	LMHCC300EN2BASE-2	EDITION	0	SHEET	3/3